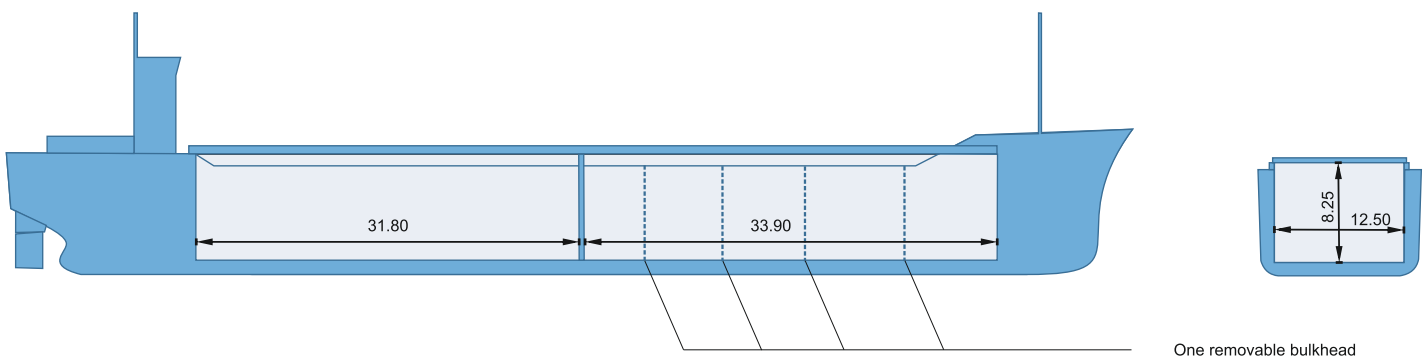


m/v Trine



Built:	1986, Hegemann Shipyard, Germany
Call sign:	V2EN5
IMO No:	8519241
Type:	Multipurpose Dry Cargo Carrier
Flag:	Antigua & Barbuda
Ice Class:	1B
DWAT:	4300 mt
GT:	3448
NT:	1851
Length over all:	102.18 m
Breadth over all:	15.20 m
Moulded depth:	7.50 m
Draft:	5.35 m
2 Hatches (L x W):	33.00 x 12.50 m / 30.50 x 12.50 m
2 Holds (L x W x H):	33.9 x 12.5 x 8.25 m / 31.8 x 12.5 x 8.25 m
Hold Capacity (grain):	239000 cbft / 6750 cbm
Main Engine:	2430 kW
Speed:	10 knots
Phone on board:	+372 5306 3169



Capacities stated in this list are based on averages. Particulars believed to be correct but not guaranteed.