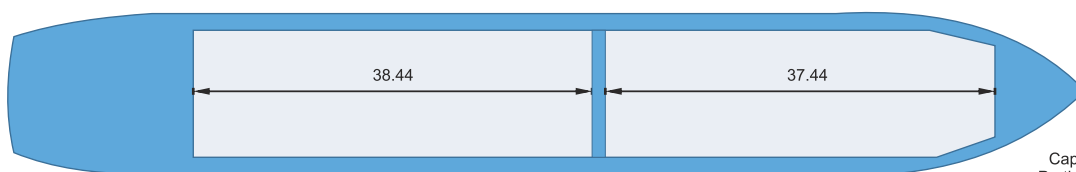
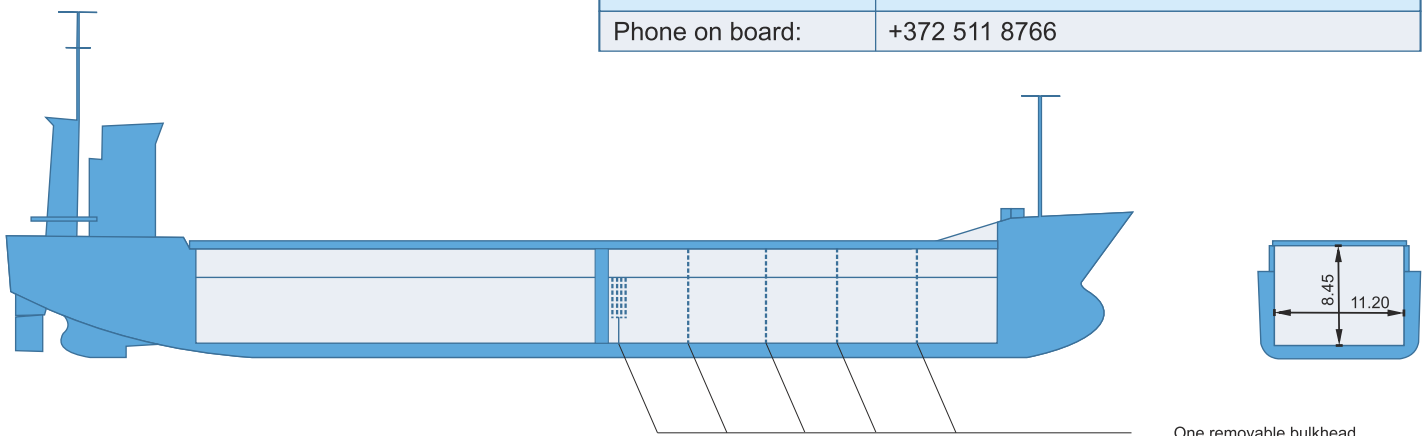


m/v Kati



Built:	1998, Pattje Shipyard B.V., the Netherlands
Call sign:	9HA2779
IMO No:	9173214
Type:	Multipurpose Dry Cargo and Container Carrier
Flag:	Malta
Ice Class:	1A
DWAT:	4931 mt
GT:	3454
NT:	2035
Length over all:	106.64 m
Breadth over all:	13.80 m
Moulded depth:	7.40 m
Draft:	5.63 m
2 Hatches (L x W):	37.44x11.20 m / 38.44x11.20 m
2 Holds (L x W x H):	37.44x11.20x8.45 m / 38.44x11.20x8.45 m
Hold Capacity (grain):	243596 cbft / 6898 cbm
TEU:	309
Main Engine:	MAK 6M32, 2640 kW
Speed:	12 knots
Phone on board:	+372 511 8766



Capacities stated in this list are based on averages. Particulars believed to be correct but not guaranteed.