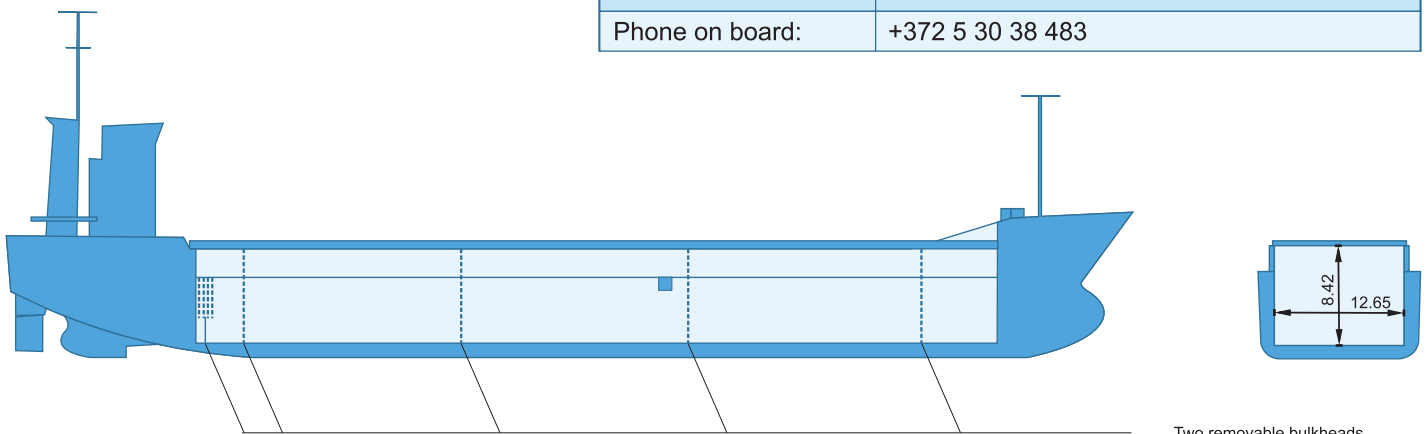


## m/v Kaisa



Built:	2005, Bodewes Shipyard B.V., Hoogezand, the Netherlands
Call sign:	9HRF9
IMO No:	9333462
Type:	Multipurpose Dry Cargo and Container Carrier
Flag:	Malta
Ice Class:	1B
DWAT:	4527 mt
GT:	3183
NT:	1765
Length over all:	89.94 m
Breadth over all:	15.20 m
Moulded depth:	6.90 m
Draft:	5.25 m
1 Hatch (L x W):	61.50 x 12.65 m
1 Hold (L x W x H):	61.50 x 12.65 x 8.42 m
Hold Capacity (grain):	225700 cbft / 6392 cbm
TEU:	216
Main Engine:	MAK 6M25, 1850 kW
Speed:	12 knots
Phone on board:	+372 5 30 38 483



Capacities stated in this list are based on averages. Particulars believed to be correct but not guaranteed.