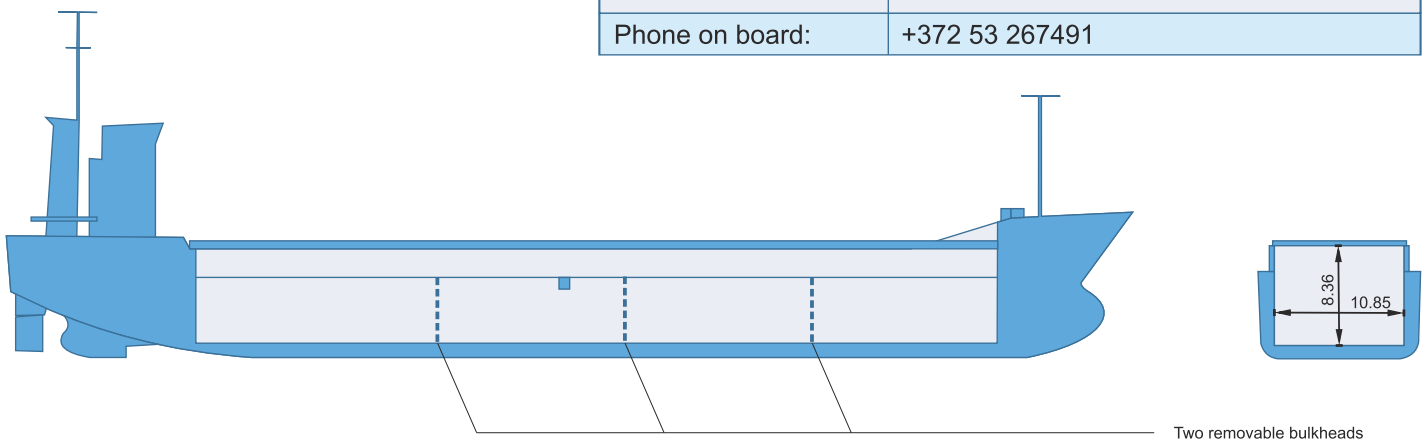


m/v Kadri



Built:	1995, Scheepswert Ferus Smit B.V., Hoogezand, the Netherlands
Call sign:	9HRQ8
IMO No:	9114725
Type:	Multipurpose Dry Cargo Carrier
Flag:	Malta
Ice Class:	1A
DWAT:	4506 mt
GT:	3117
NT:	1744
Lenght over all:	99.86 m
Breadth over all:	13.63 m
Moulded depth:	7.20 m
Draft:	5.64 m
1 Hatches (L x W):	70.90 x 10.85 m
1 Hold (L x W x H):	70.90 x 10.85 x 8.36 m
Hold Capacity (grain):	223540 cbft / 6330 cbm
Main Engine:	Stork Wärtsilä 8SW280, 2400 kW
Speed:	12 knots
Phone on board:	+372 53 267491



Capacities stated in this list are based on averages. Particulars believed to be correct but not guaranteed.